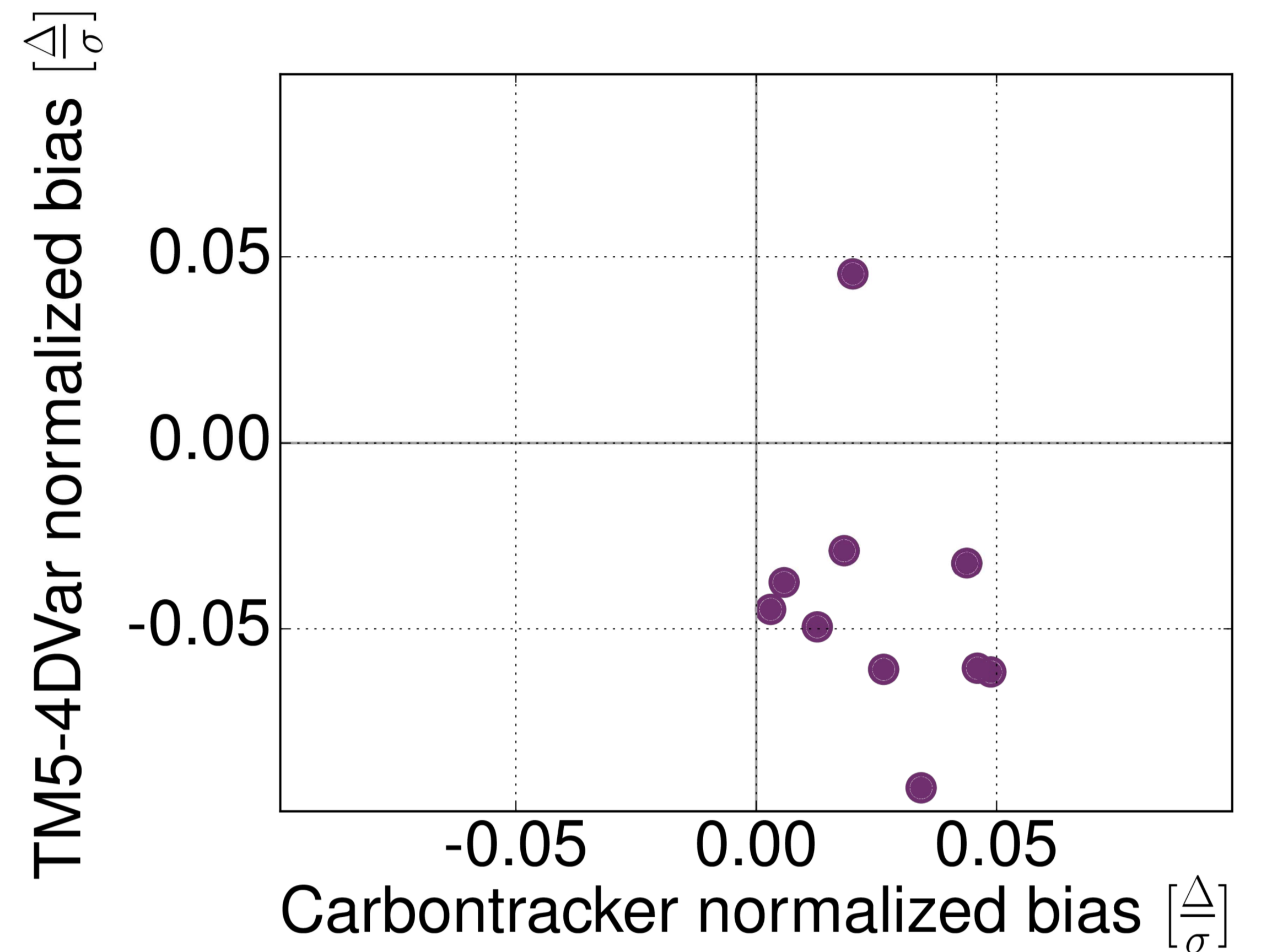
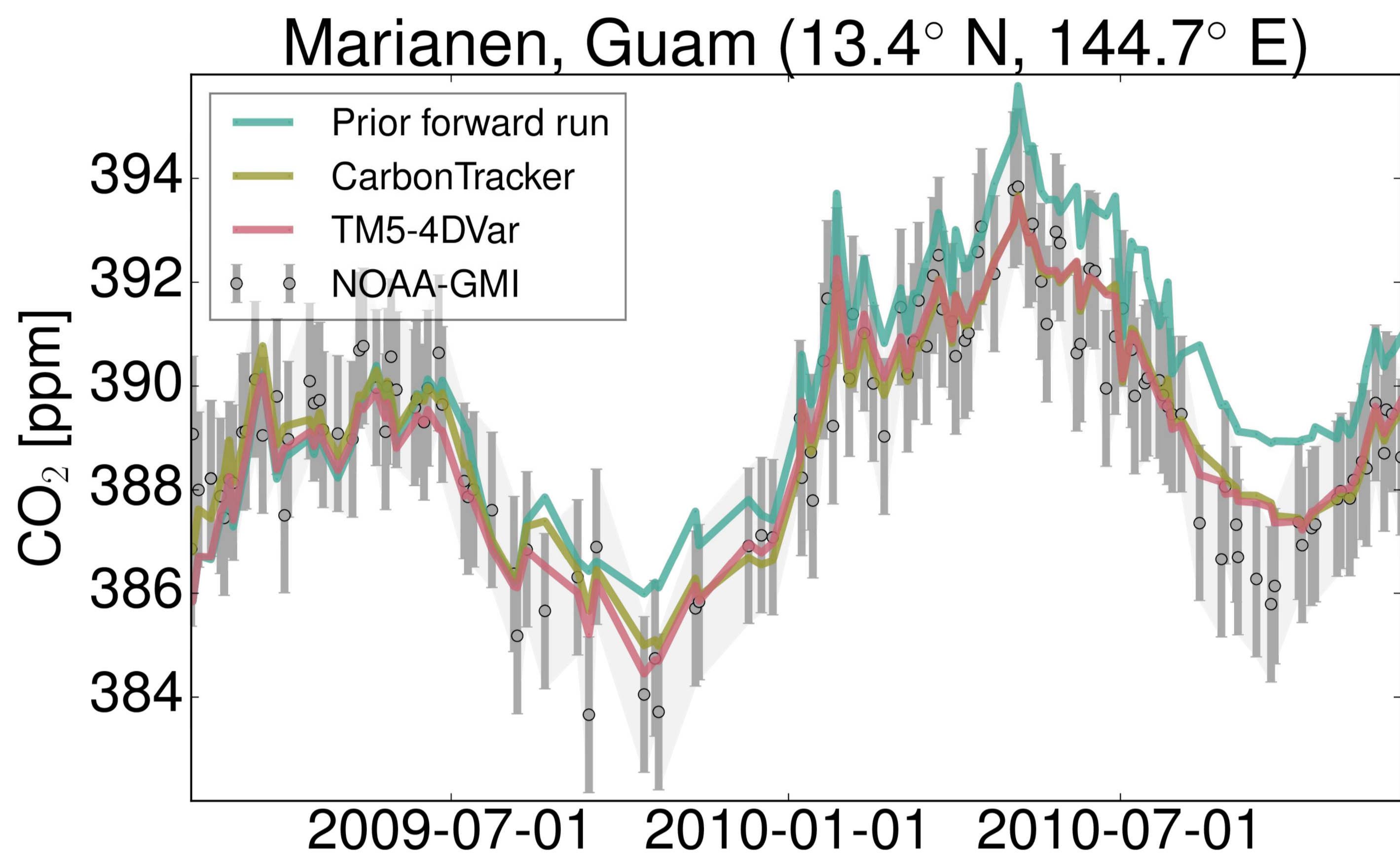
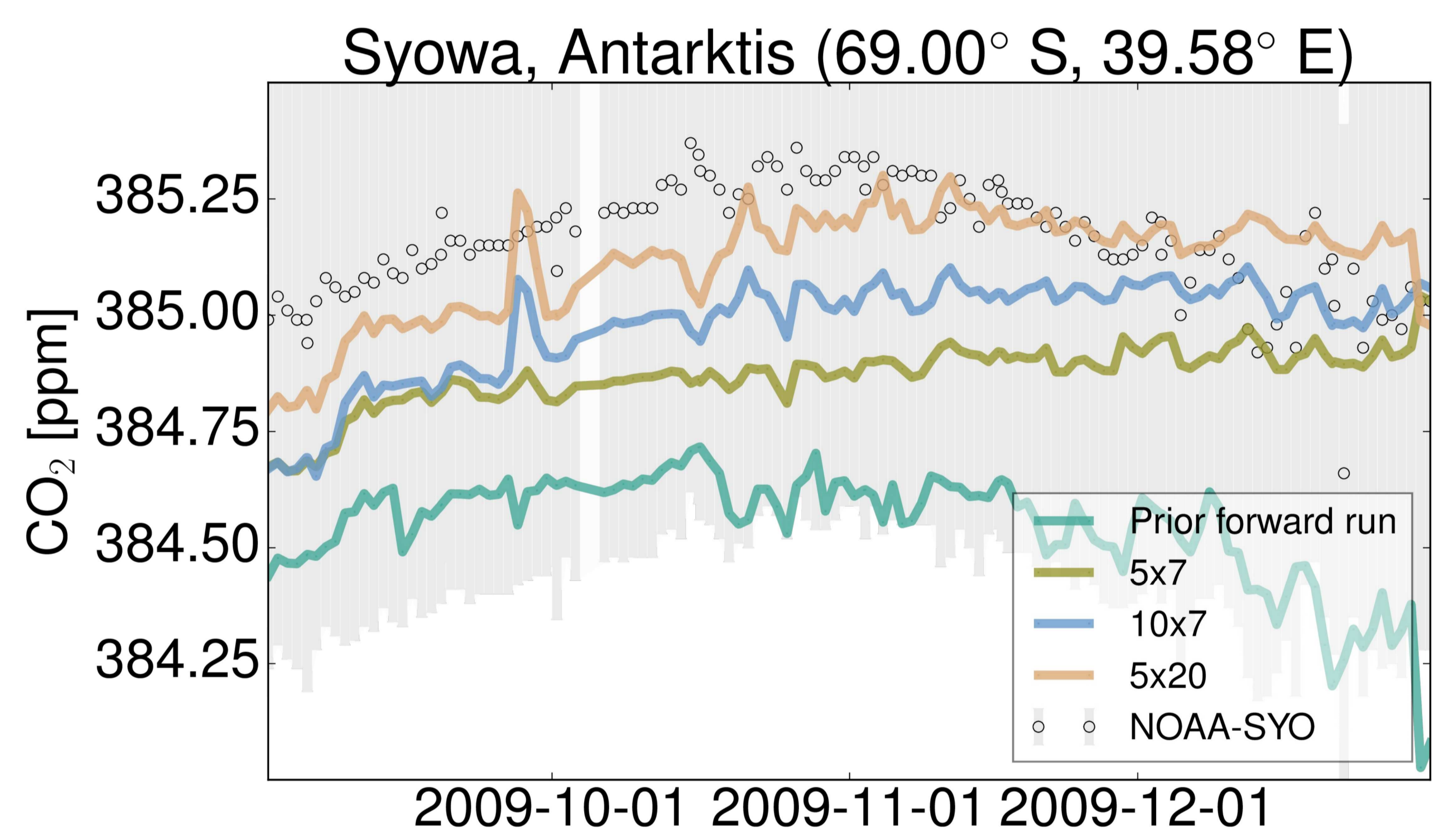
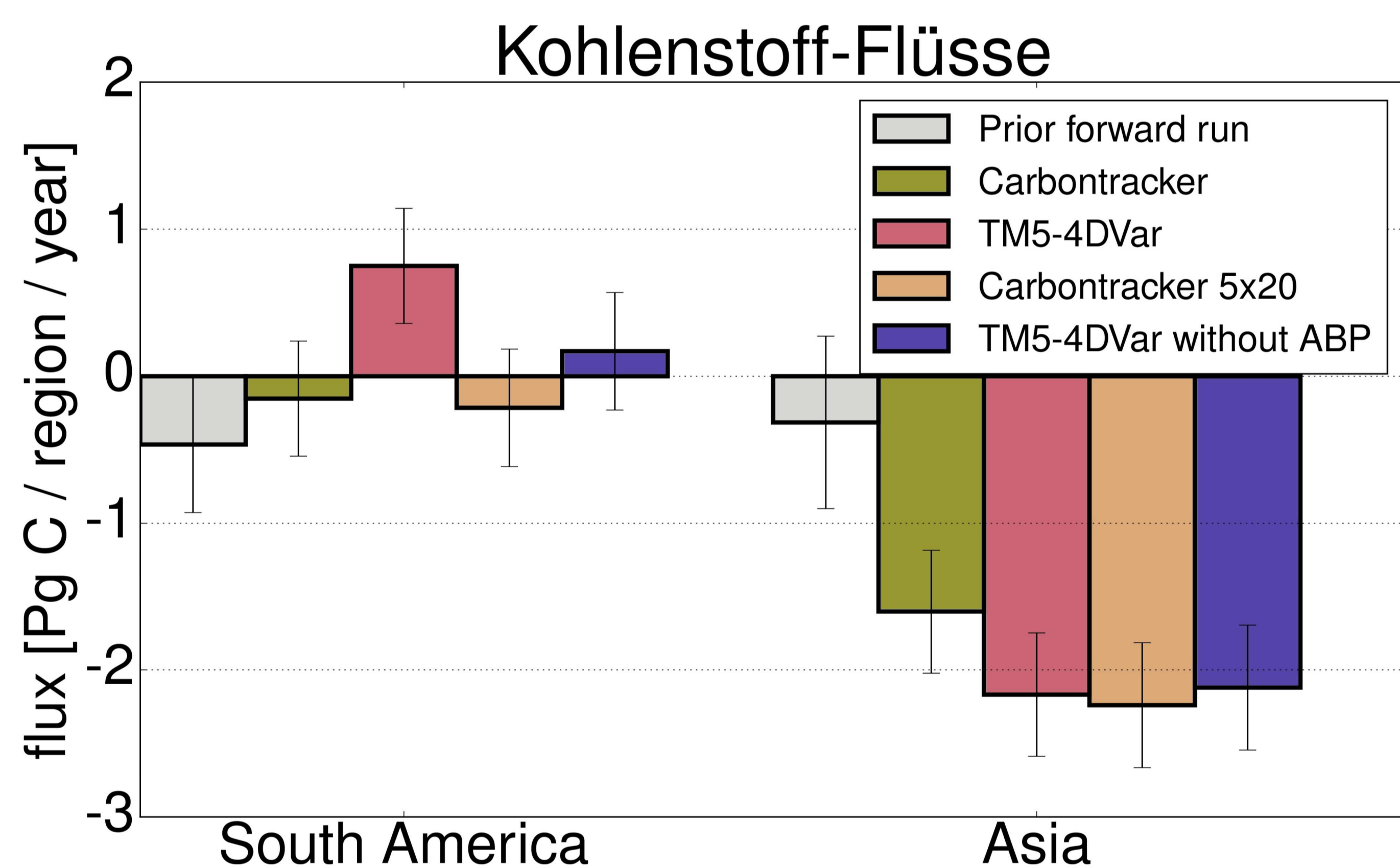


# Vergleich zweier harmonisierter Modelle

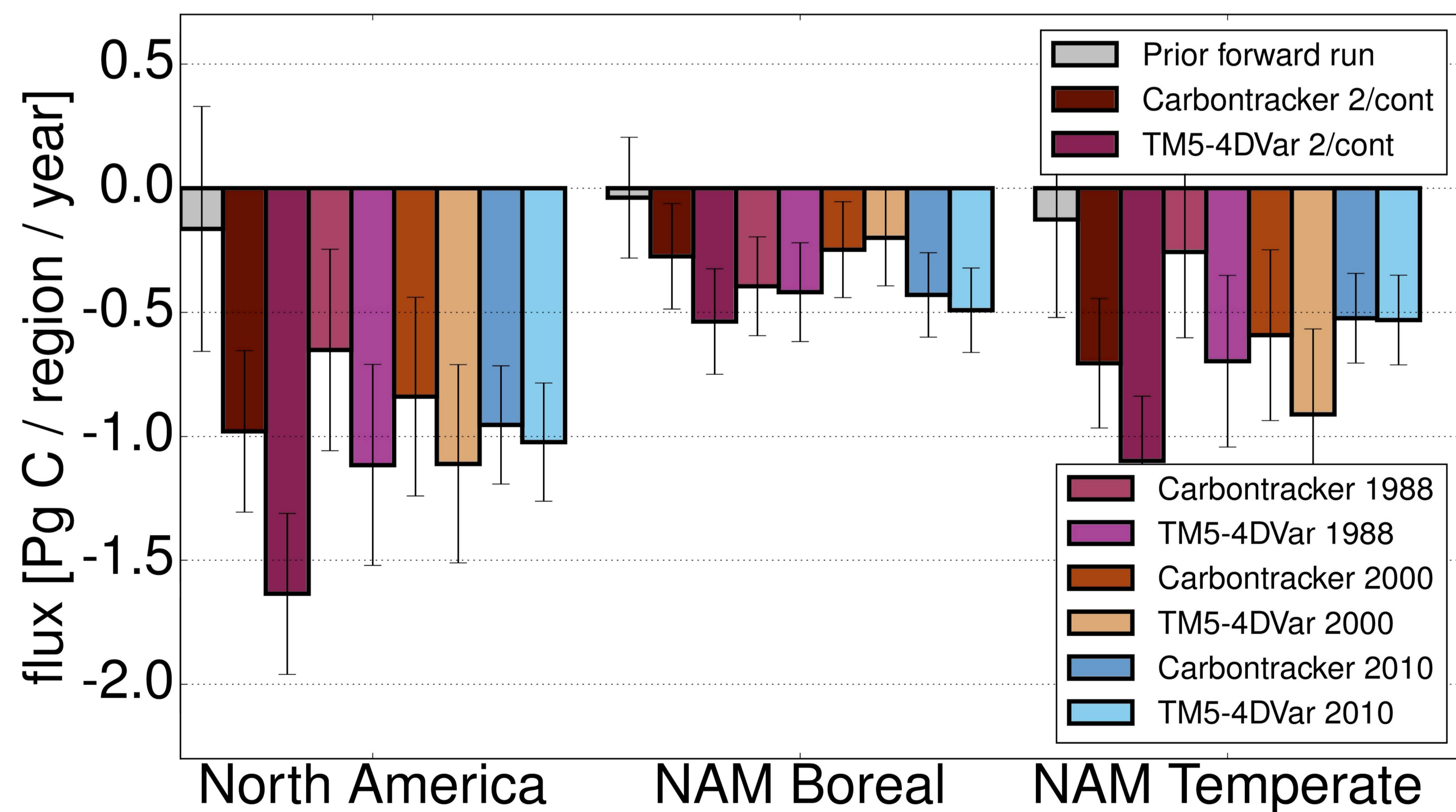
## Qualität der atmosphärischen Konzentrationen



## Spezifische Unterschiede der Modelle



Fluss-Unterschiede sinken mit steigender Messdichte.



Inter-Modell Fehler:

- Nordamerika:  $\pm 0,1$  Pg C/a
- Europa:  $\pm 0,25$  Pg C/a
- Asien:  $\pm 0,5$  Pg C/a